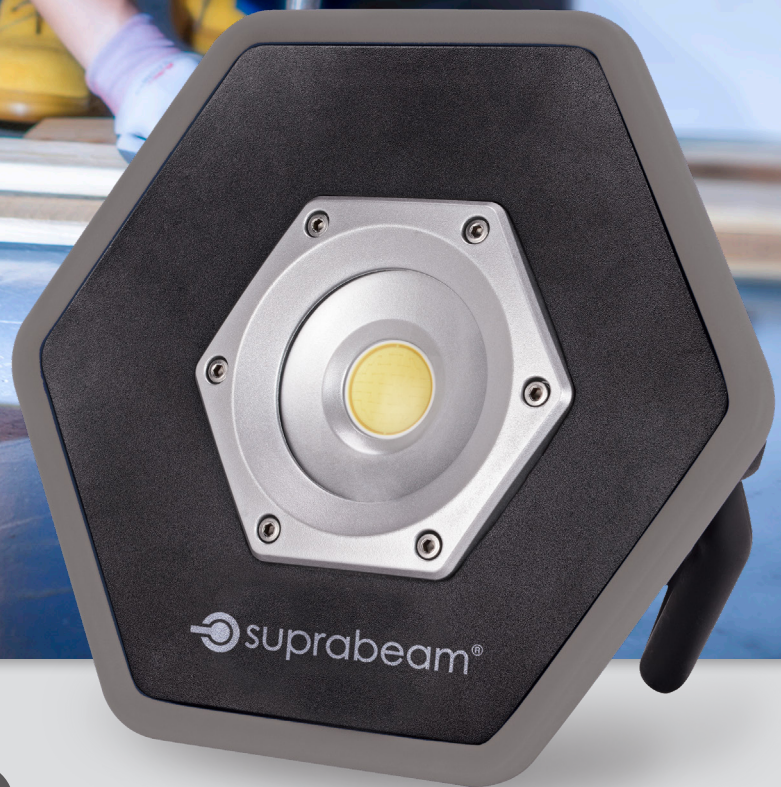


 suprabeam®

W2<sub>r</sub>



2200  
LUMENS



Li-ion  
57.2 Wh



1150 g



110°



IP65

410.1201

# KEY FEATURES / UNIQUE SELLING POINTS (USP)



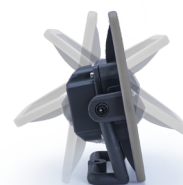
## WATER RESISTANT AND DUSTPROOF - IP65

Tested according to IP65 ensures water resistant and dustproof protection. Designed for trouble-free usage in the field even in wet, dirty or dusty conditions.



## MAGNETIC (OPTIONAL ACCESSORY)

With our magnet for W2r and W4r (410.9003) the W2r can be fixed on any magnetic surface to use it as a fixed work light with the perfect angle.



## 180° ADJUSTABLE LIGHT

The 180° flexible handle on the W2r ensures a very flexible og versatile worklight for multiple situations.



## CONTINUOUS USE WITH CABLE

The W2r can be used with the charging cable plugged in. This means the W2r can be used for a whole workday without charging.



## HIGH CRI +80

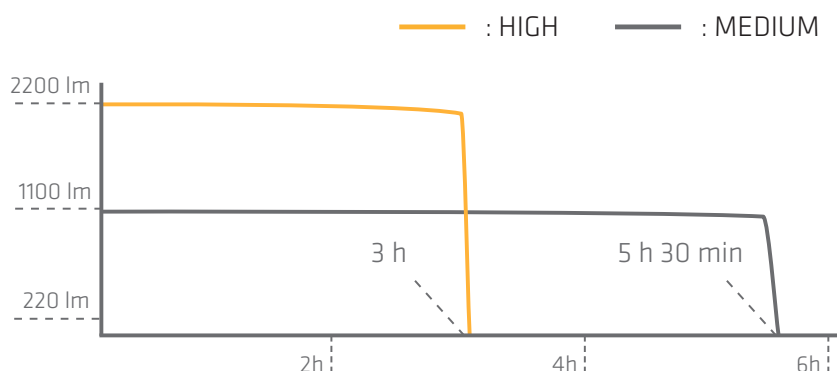
The W2r has High CRI (+80) to bring out the true colors. With the High CRI the W2r provides the most natural colors to make the workday alot easier.



## 3 LED BATTERY INDICATORS

The 3 LED battery level indicators will indicate how much power is left in the D4r and when it needs to be recharged.

# LIGHT CURVE AND RUNTIMES



### HIGH

2200 LUMENS	3 h
-------------	-----

### MEDIUM

1100 LUMENS	5 h 30 min
-------------	------------

### LOW

550 LUMENS	11 h
------------	------

# WHAT'S IN THE BOX

## WORKLIGHT



## ADAPTER



# PACKAGING



## PACKAGING

Customs Tariff Number:	9405 4039
Packaging:	Carton Box
Single Box Content / Size / Weight:	1 pcs, Height/Width/Depth, 23.5/25/8.5 cm / 1500 g
Master Box Content / Size / Weight:	4 pcs, 36 x 26 x 25 cm / 6.6 kg
Part. No.:	410.1201
EAN-CODE:	5704049908062

# SPECIFICATIONS

LED / Focus Configuration:	Super bright COB LED, 6500K
Case Material / Surface Treatment:	Aluminium, 2K Plastic Soft/Hard
Case Color:	Black / Light Grey
Switch:	HIGH, MEDIUM, LOW
Dimensions:	H: 200mm, W: 225mm, D: 70mm
Weight incl. Battery:	1150g
Ingress Protection/Impact Protection Rating:	Water Resistant and Dustproof IP65 / IK07
Temperature (Operation):	-10°C to +40°C

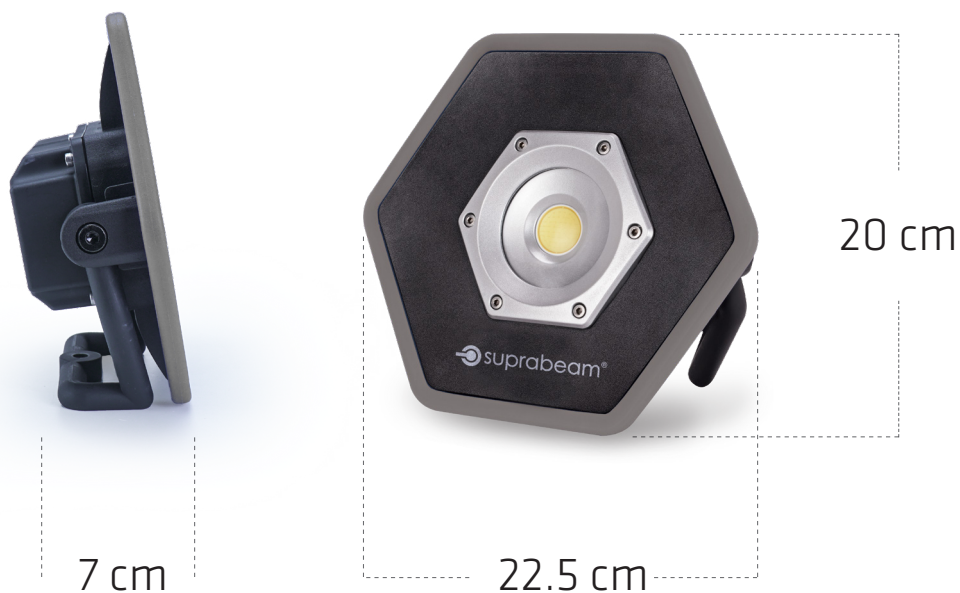
# ELECTRONICS

Built in Controller:	Yes, 3-step controller by press
Standard Power Source:	Li-ion 11V, 5200 mAh, 57.2 Wh
Charging Time:	3 hours 45 min
Beam / Distance:	180° Adjustable Handle / 65 m
Luminous Flux:	High: 2200lm, Medium: 1100lm, Low: 550lm
Lighting Time:	High: 3h, Medium: 5h 30 min, Low: 11h
Accessories Included:	110V -240V AC/DC Charger / 15V 1.5A
Charging Temperature:	-0°C to +45°C

# ACCESSORIES

PRODUCT	DESCRIPTION	PARTNUMBER	WEIGHT	SINGLE BOX SIZE	EAN CODE
	Tripod for single lamp mount	410.9003	2.6 kg	L: 77 cm, W: 16 cm, H: 16 cm	5704049908116
	Magnet for worklight	410.9002	118 g	L: 4.5 cm, W: 4.5 cm, H: 4.5 cm	5704049908109

# DIMENSIONS



Distributor's Stamp:

Distributed worldwide by:

Steiner A/S  
Dyssen 3  
DK-8200 Aarhus N, Denmark

Phone: +45 87 525 212  
**www.suprabeam.com**  
info@suprabeam.com